

# Facilitating Partnerships, Patient Engagement and Access to Key Opinion Leaders with OniX AI and OniX Hub

PARTNERING | FUNDING | INNOVATION | KNOWLEDGE | LICENSING | INVESTING

## Introduction:

In the ever-evolving landscape of therapeutic research and development, fostering partnerships, engaging patients, and accessing Key Opinion Leaders (KOLs) are pivotal steps towards success. However, identifying the appropriate partners and effectively engaging with patients and influential leaders can pose significant challenges. Enter OniX Hub and OniX AI – positioned to streamline the process and unlock opportunities for collaboration and engagement within the research enterprise.

## OniX Hub: A Gateway to Partnerships and KOLs:

Central to the advancement of partnership and engagement is the OniX Hub, a platform that consolidates global research data sourced from grants. These grants provide access to the university research landscape, along with contributions from private and government funders, startup and biotech pipelines, and other global research initiatives like incubators and research parks. OniX Hub serves as a

comprehensive repository of information, offering valuable insights into potential partnerships, patient engagement opportunities, and Key Opinion Leaders (KOLs). This wealth of global data facilitates the development of patient-centric therapeutics, driving innovation and progress in the field.

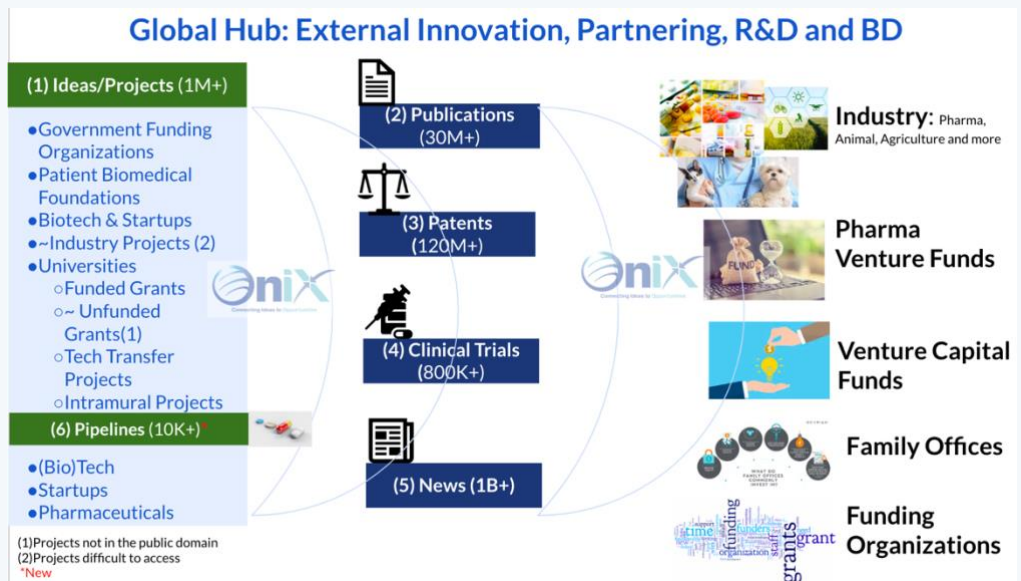
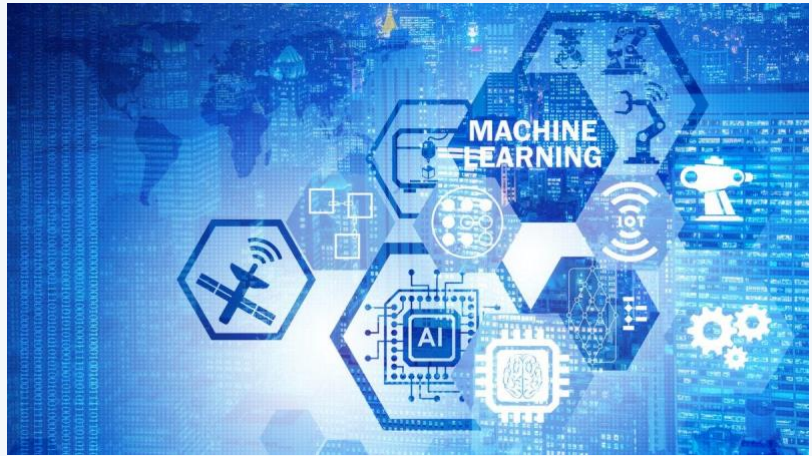


Figure 1. Sources of Data within the OniX Hub and global network

## OniX AI: Powering Strategic Insights:

Empowering the partnership engine is OniX AI, equipped with advanced artificial intelligence technologies. OniX AI seamlessly integrates with OniX Hub, utilizing AI algorithms to analyze data and identify researchers, teams,

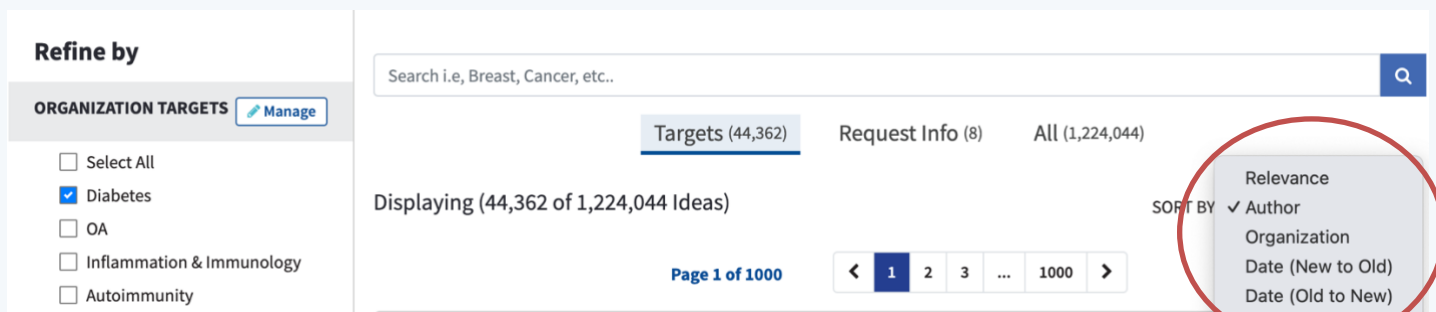


private patient foundations, and Key Opinion Leaders (KOLs) aligned with specific research interests. By harnessing AI, OniX AI expedites the process of identifying strategic partners and influential leaders, thereby streamlining collaboration.

Empowering the partnership engine is OniX AI, equipped with advanced artificial intelligence technologies. OniX AI seamlessly integrates with OniX Hub, utilizing AI algorithms to analyze data and identify researchers, teams, private patient foundations, and Key Opinion Leaders (KOLs) aligned with specific research interests. By harnessing AI, OniX AI expedites the process of identifying strategic partners and influential leaders, thereby streamlining collaboration.

## Enhancing Partnerships:

Through OniX Hub and OniX AI, accessing and engaging with potential partners becomes easier and faster. From identifying researchers and teams working on complementary projects to pinpointing KOLs with expertise in therapeutic areas, the possibilities are global, local and precise. OniX Hub's dataset, coupled with OniX AI's capabilities, facilitates strategic partnerships that drive research forward.



The screenshot shows a search interface with the following elements:

- Refine by** section on the left:
  - ORGANIZATION TARGETS** (Manage)
  - Select All
  - Diabetes
  - OA
  - Inflammation & Immunology
  - Autoimmunity
- Search bar**: "Search i.e, Breast, Cancer, etc.." with a search icon.
- Filters**: "Targets (44,362)", "Request Info (8)", "All (1,224,044)".
- Displaying**: "Displaying (44,362 of 1,224,044 Ideas)".
- Page**: "Page 1 of 1000".
- Navigation**: "< 1 2 3 ... 1000 >".
- Sort By** dropdown menu (circled in red):
  - Relevance
  - Author
  - Organization
  - Date (New to Old)
  - Date (Old to New)

Figure 2. Organization of Data by Researcher, Institution or company

### Accessing Key Opinion Leaders:

In addition to fostering partnerships, OniX Hub and OniX AI offer access to Key Opinion Leaders (KOLs) within the research community. Through the comprehensive access to grants and publications, OniX provides insights into both current and previous KOLs. Grants offer access to researchers and teams currently involved in specific research areas, while publications offer insights into current and historical trends. By analyzing these research trends, OniX AI facilitates connections with KOLs who can offer valuable insights, guidance, and support. This engagement not only enhances the credibility and impact of research endeavors but also lays the groundwork for fruitful collaborations and advancements.



### Patient Engagement:

The OniX Hub offers a plethora of research data from various private patient foundations and funders, many of whom are receptive to partnerships aimed at advancing research in both preclinical and clinical stages. During the preclinical phase, opportunities may arise to access early-stage innovative projects and potential co-funding opportunities. Meanwhile, in the clinical phase, valuable insights and resources for patient recruitment can be accessed. Notable foundations



*Figure 3. Enhancing Patient Engagement Across the Research Spectrum*



included in the OniX Hub are the Melanoma Research Alliance, CurePSP, Muscular Dystrophy Association, JDRF, MJFF, ADDF, AHA, EB Research Partnership, Cancer Research UK, British Heart Association, Dementia UK, among others.

## Conclusion:

Partnerships and engagement are essential cornerstones of the research enterprise, propelling innovation and progress. With the assistance of OniX Hub and OniX AI, the tasks of identifying partners, accessing Key Opinion Leaders (KOLs), and developing patient-centric therapeutics are made more accessible. By harnessing the power of data and AI, researchers and companies can navigate collaborations with confidence, accelerating the pace of discovery and ultimately improving patient outcomes.

### **Insights into Partnering and KOL Access with OniX Hub and OniX AI**

#### *Unlocking Collaborative Opportunities: OniX Hub and OniX AI at a Glance*

##### **1. Streamlined Partnership Discovery:**

- OniX Hub's comprehensive database simplifies the process of identifying potential partners by aggregating a wealth of research data, including grants, tech transfer projects, and publications.
- OniX AI enhances this capability by utilizing advanced AI algorithms to analyze data patterns and identify researchers, teams, and institutions aligned with specific research interests.

##### **2. Strategic KOL Engagement:**

- Accessing Key Opinion Leaders (KOLs) is made effortless through OniX Hub and OniX AI, which analyze research trends and identify influential voices within the research community.
- Engaging with KOLs provides valuable insights, guidance, and support, enhancing the credibility and impact of research endeavors.

##### **3. Enhanced Collaboration Opportunities:**

- By fostering partnerships and engaging with KOLs, researchers can access a network of expertise and resources, driving collaborative research initiatives forward.
- OniX Hub and OniX AI facilitate meaningful collaborations that accelerate the pace of discovery and ultimately improve patient outcomes.

##### **4. Patient-Centric Approaches:**

- OniX Hub's integration of grants data from private patient biotech research foundations underscores the potential for patient engagement within the research enterprise.
- Developing patient-centric therapeutics is made possible through partnerships forged and insights gained via OniX Hub and OniX AI.

*Unlock the power of collaboration. Harness the insights of OniX Hub and OniX AI to drive innovation and advance therapeutic development.*